

TECTONICA GLOBALĂ

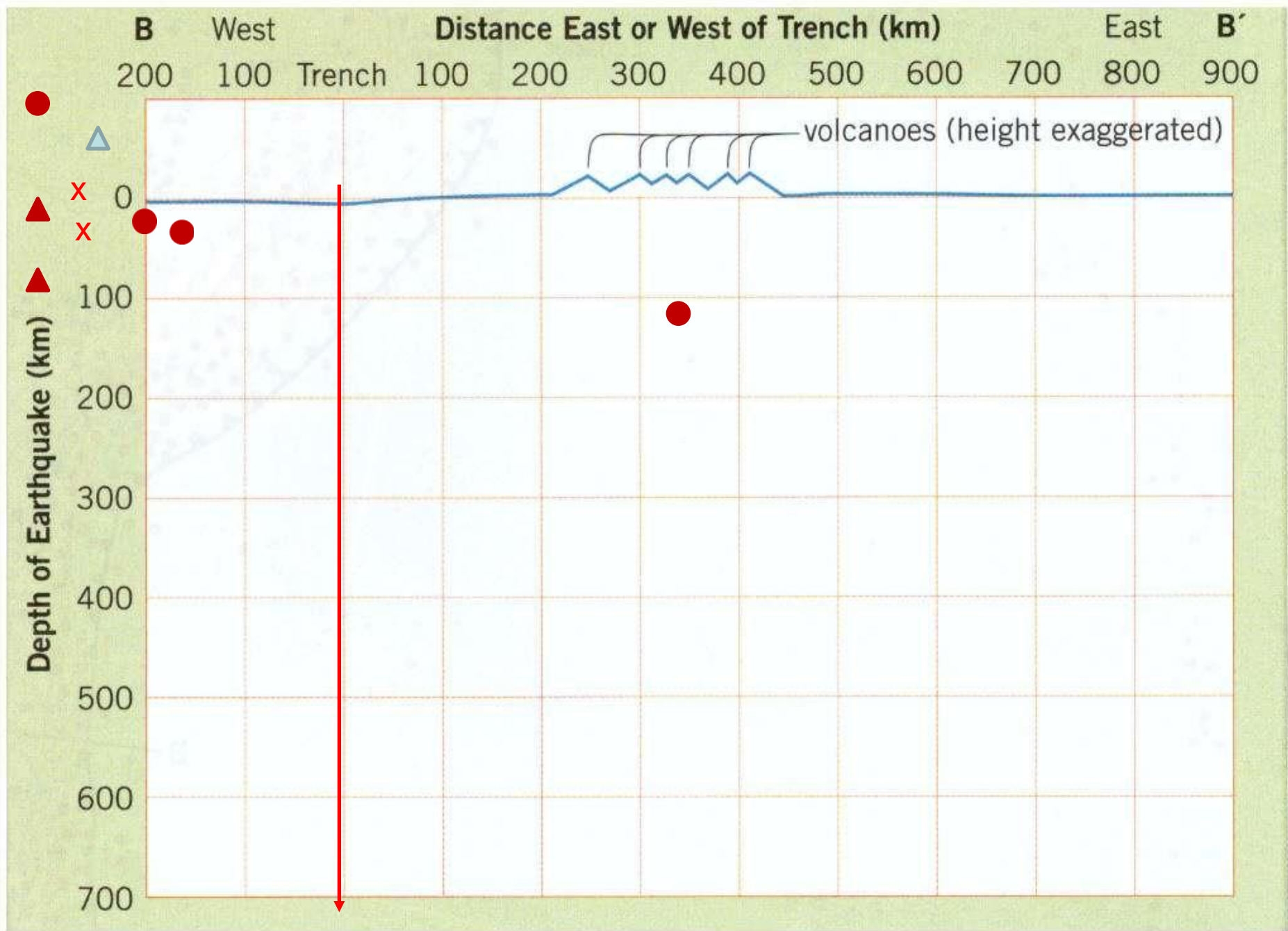


PLĂCI TECTONICE

**MARGINILE PLĂCILOR TECTONICE
= EXERCİȚIU =**

Location East or West of Trench	Depth of Earthquake (or volcano location)	Location East or West of Trench	Depth of Earthquake (or volcano location)	Location East or West of Trench	Depth of Earthquake (or volcano location)
200 km West	20 km	260 km East	120 km	450 km East	150 km
160 km West	25 km	300 km East	110 km	500 km East	30 km
60 km West	10 km	330 km East	40 km	500 km East	160 km
30 km West	25 km	330 km East	120 km	500 km East	180 km
0 (trench)	20 km	390 km East	40 km	590 km East	20 km
50 km East	60 km	390 km East	140 km	710 km East	30 km
80 km East	70 km	410 km East	25 km	780 km East	530 km
100 km East	10 km	410 km East	110 km	800 km East	560 km
120 km East	80 km	410 km East	150 km	820 km East	610 km
200 km East	110 km	450 km East	50 km	880 km East	620 km
220 km East	30 km				

$$14+13+4=31$$



A. CLASIFICAȚI SEISMELE PROIECTATE ȘI FIGURAȚILE PE PLANUL DE PROIECȚIE

*În funcție de localizarea în raport cu subdiviziunile litosferei

- 1.
- 2.

*În raport cu adâncimea focarelor

- 1.
- 2.
- 3.

*Stabiliți frecvența seismelor în funcție de adâncimea focarelor

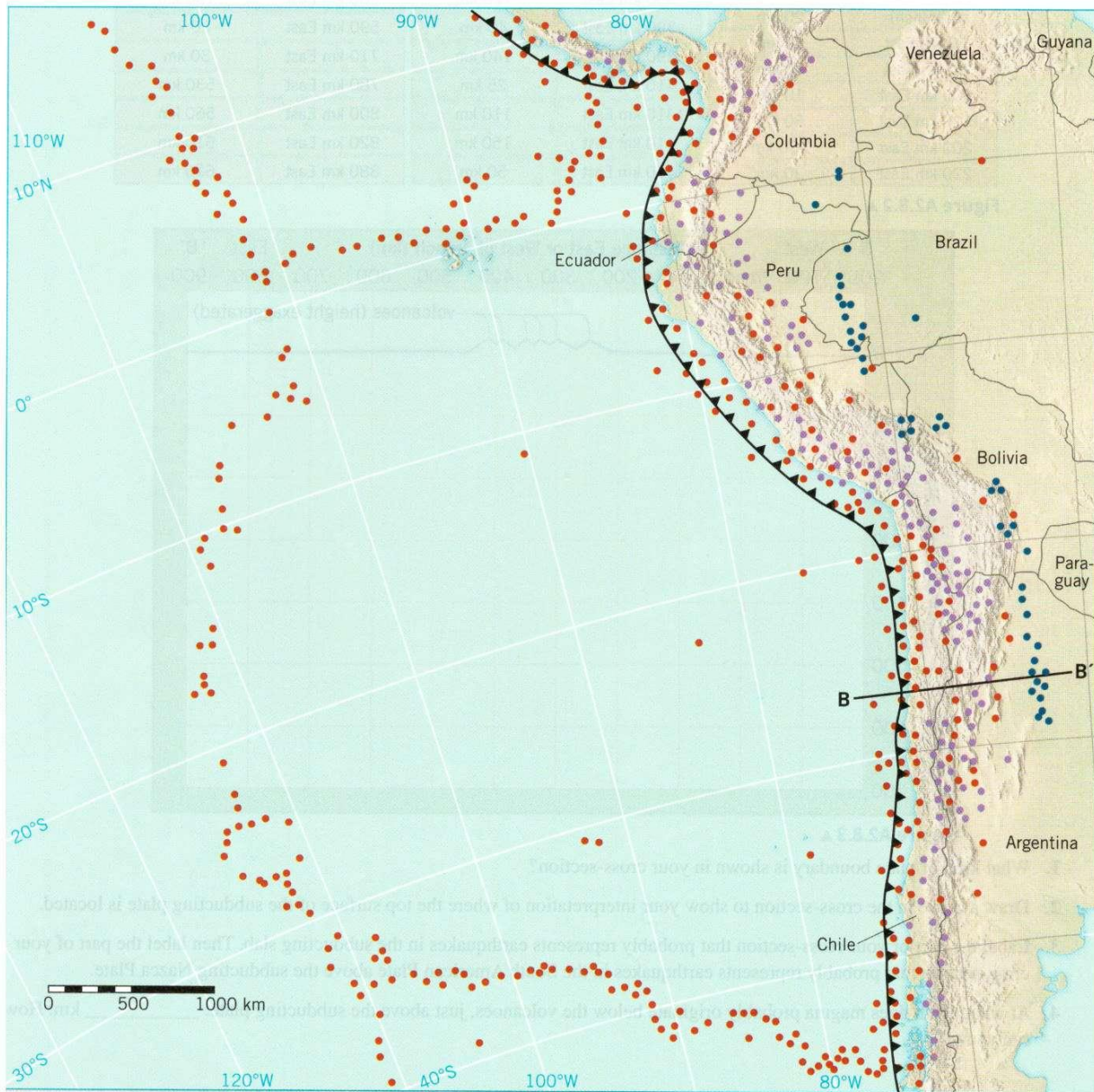
- 1.
- 2.
- 3.

B. PRECIZAȚI TIPUL DE MARGINE A PLĂCII TECTONICE

-

C. PRECIZAȚI TIPUL DE MARGINE CONTINENTALĂ

-

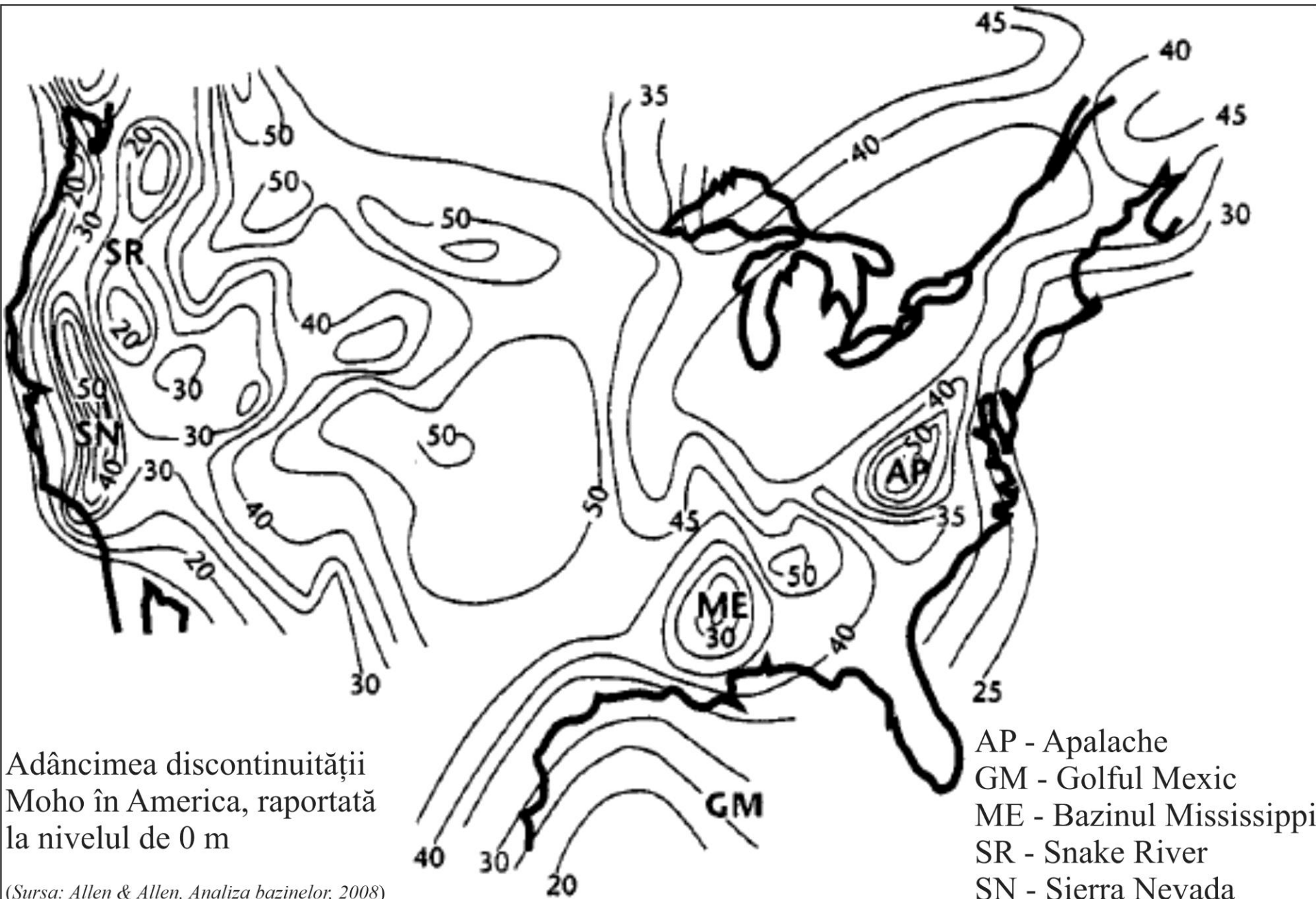


Map of Earthquake Activity in the Eastern Pacific Ocean and South America

- Shallow-focus earthquakes
0–69 km deep
- Intermediate-focus earthquakes
70–299 km deep
- Deep-focus earthquakes
300–700 km deep
- ▲ Trench

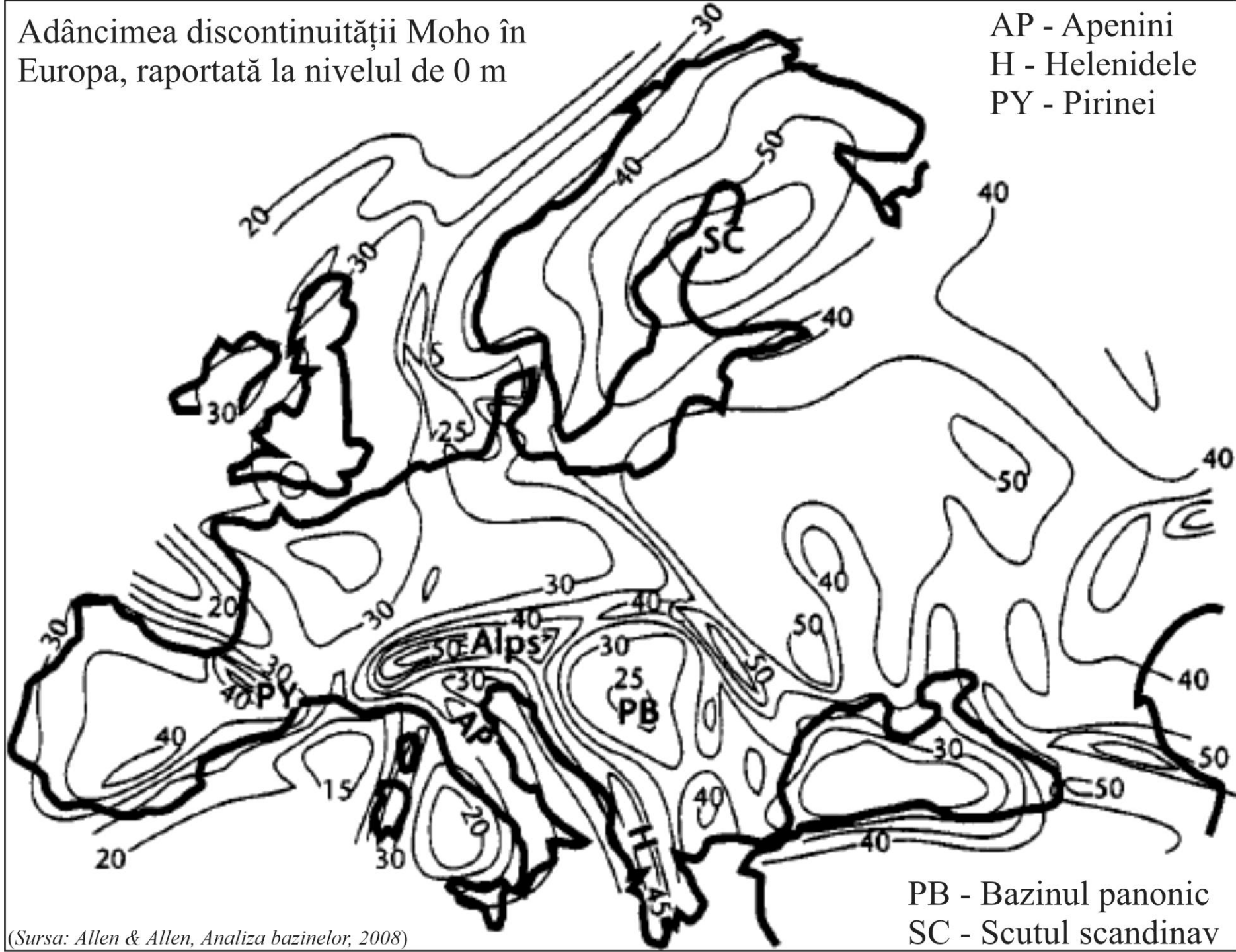
(Data from U.S. Geological Survey)





Adâncimea discontinuității Moho în
Europa, raportată la nivelul de 0 m

AP - Apenini
H - Helenidele
PY - Pirinei



(Sursa: Allen & Allen, Analiza bazinelor, 2008)

PB - Bazinul panonic
SC - Scutul scandinav

